

Seine-Rat River Conservation District

Newsletter

Building a Sustainable Future with Local Knowledge and Innovation

JANUARY 2010



DID YOU KNOW?

The SRRCD is funding a documentary of the Seine River produced by a local media company, Granger Media Group. It will explore the history of the river, human impacts, current rehabilitation efforts and the variety of ecosystems. It will be available for viewing in schools and possibly airing on network television.

SRRCD

PARTNERS:

- Landowners
- RM of De Salaberry
- RM of Hanover
- RM of La Broquerie
- RM of Montcalm
- RM of Reynolds
- RM of Ritchot
- RM of Springfield
- RM of Ste. Anne
- RM of Stuartburn
- RM of Taché
- Town of Ste. Anne
- Village of St. Pierre-Jolys
- City of Steinbach
- Town of Niverville (Apr/10)
- RM of Franklin (Apr/10)
- Manitoba Water Stewardship



Seine River Riparian Enhancement Project

After three weeks of kayaking down the Seine River starting in Marchand and ending at the floodway, the SRRCD is proud to announce the end of the inventory and assessment of the Seine River Riparian Enhancement Project. During this trip, Catherine Gérardy marked 249 sites needing riparian fencing and off-site watering systems for livestock, tree planting or river clean-up (fallen trees and garbage). During the summer, landowners were contacted regarding par-



Catherine Gérardy, Seine River Project Supervisor, kayaking down the Seine River.

ticipating in these projects. The SRRCD has been successful in involving two landowners in projects requiring riparian fencing and off-site watering systems. With the help of landowners, approximately 600 trees were planted at eight sites along the Seine River. This fall, two erosion control projects were also completed. These projects involved removing concrete that was blocking the river's natural flow as well as placing rip rap and root wads to stabilize the riverbank.

Lorette Narrows Project

In an attempt to protect his riverbank from erosion, a landowner in the village of Lorette placed concrete and various other materials on the riverbank. This concrete put more pressure on top of the bank creating bank fail-

ure. As more material was dumped on the bank, more slid into the river "pinching off" or narrowing the channel. This led to various problems, the most immediate being flooding. This summer, the



Lorette Narrows—Before

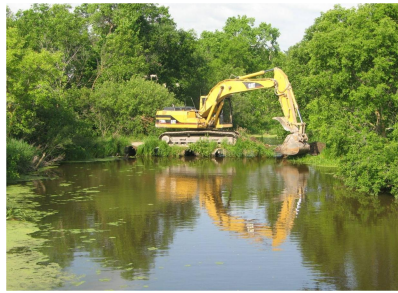
SRRCD removed the concrete, re-sloped the riverbank and placed rip rap on the river's edge. Willows were also planted to help stabilize the bank.



Lorette Narrows—After

Seine River Flow Project

Another project completed this year was the removal of six culverts in the Seine River within the Town of Ste. Anne. The goal of this project was to increase the flow of water through the town without causing upstream flooding.



Seine River Flow Project - Before



Seine River Flow Project - After

Well Water Testing

Our four technicians: Pierre de Moissac, David Beauchamp, Véronique Maynard and Carlie Pauls went from door to door in the RM of Hanover, Springfield and Ste. Anne offering landowners to test their well water for the presence of bacteria and nitrates. The program was very successful with 1228 wells tested in total. Next summer, the SRRCD is hoping to continue this program in the RM's of Ritchot and Taché.



Contact Us

**Box 339, 29 Simard St.
La Broquerie, MB
R0A 0W0**

Phone: (204) 424-5845

Fax: (204) 424-5909

Website: www.srrcd.ca

E-mail: manager@srrcd.ca

The SRRCD is dedicated to supporting and promoting the sustainable management of our land and our water resources in Manitoba. Here are the programs offered to landowners:

- **Riparian Fencing**
- **Cattle Crossing**
- **Grass/Treed Buffers**
- **Off-site Watering Systems**
- **Well Decommissioning**
- **Water Retention**
- **Rain Gardens**
- **Grassed Waterways**
- **Tree Planting/Shelterbelt Planning**
- **Well Water Testing**
- **Environmental Education**
- **Wildlife Habitat Enhancement**